

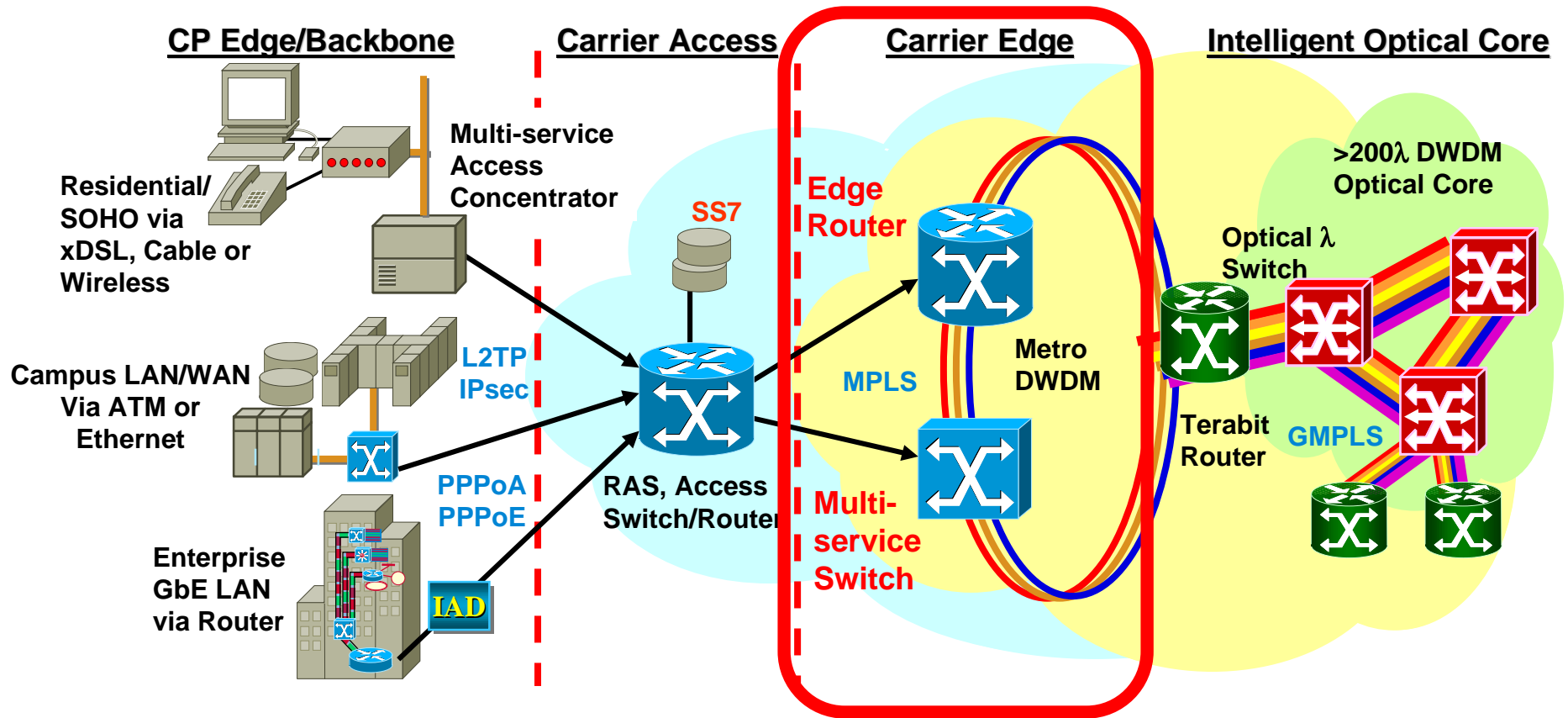


RouterTester – At Your Service.



Agilent Technologies

RouterTester is used by NEMs & Service Providers...



...for testing Optical, IP Core, Metro/Edge and Access Networks and Network Equipment

RouterTester's Value Proposition

RouterTester supports more edge services, with better scalability than anyone else so you can maximize your return on test investment.

RouterTester helps you test edge service implementations quickly and thoroughly so you can accelerate test cycles.



... the race to deploy new edge services is on!

Product Overview

Comprehensive test coverage in a single tool!

Edge Services:

- MPLS-based services
 - RFC 2547-bis VPNs
 - L2oMPLS VPNs
- PPPoX
- L2TP VPNs
- IP Multicast
- Services over VLAN

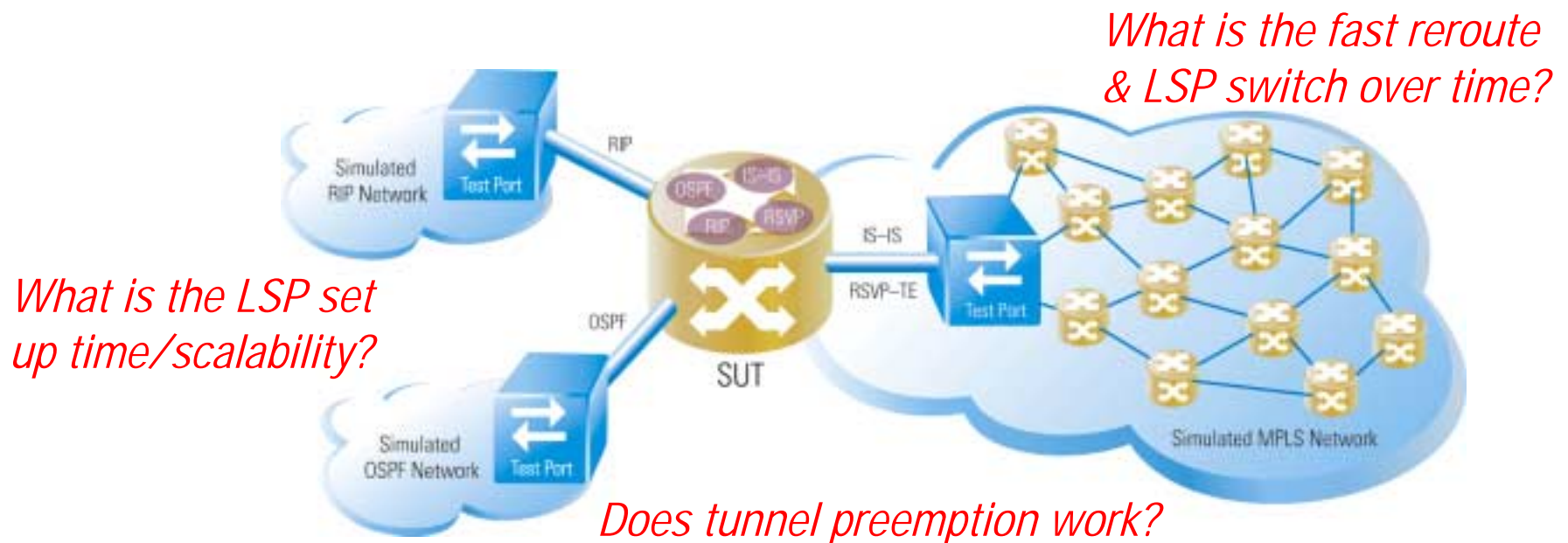
Test Measurements:

Conformance
Scalability
QoS
Interoperability
Functional

MPLS-based Services

RouterTester supports all routing/signaling protocol emulations.

- Test to industry standards
- Simulate large, realistic MPLS networks
- Measure MPLS scalability, performance and reliability



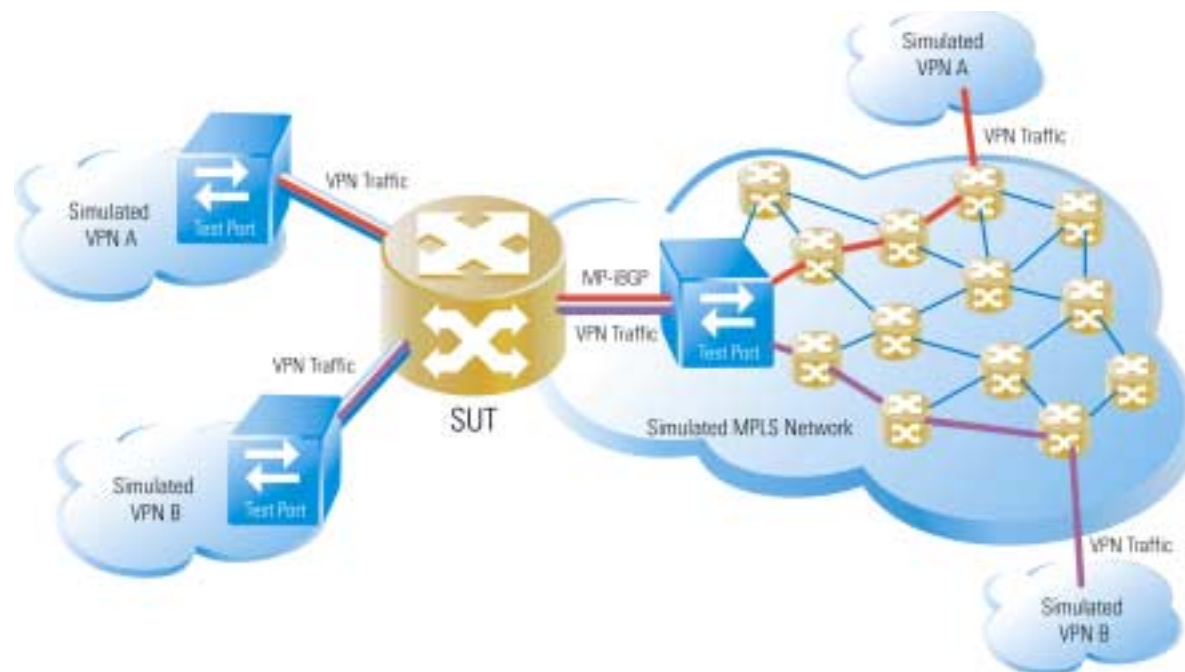
RFC 2547-bis VPNs

RouterTester's integrates multi-protocol emulation & traffic.

- Simulate realistic service provider and customer networks
- Build thousands of VRFs/port to identify scalability limitations
- Generate traffic between hundreds of simulated VPN sites and measure packet throughput, latency and loss

Simulate up to
12,000 VRFs

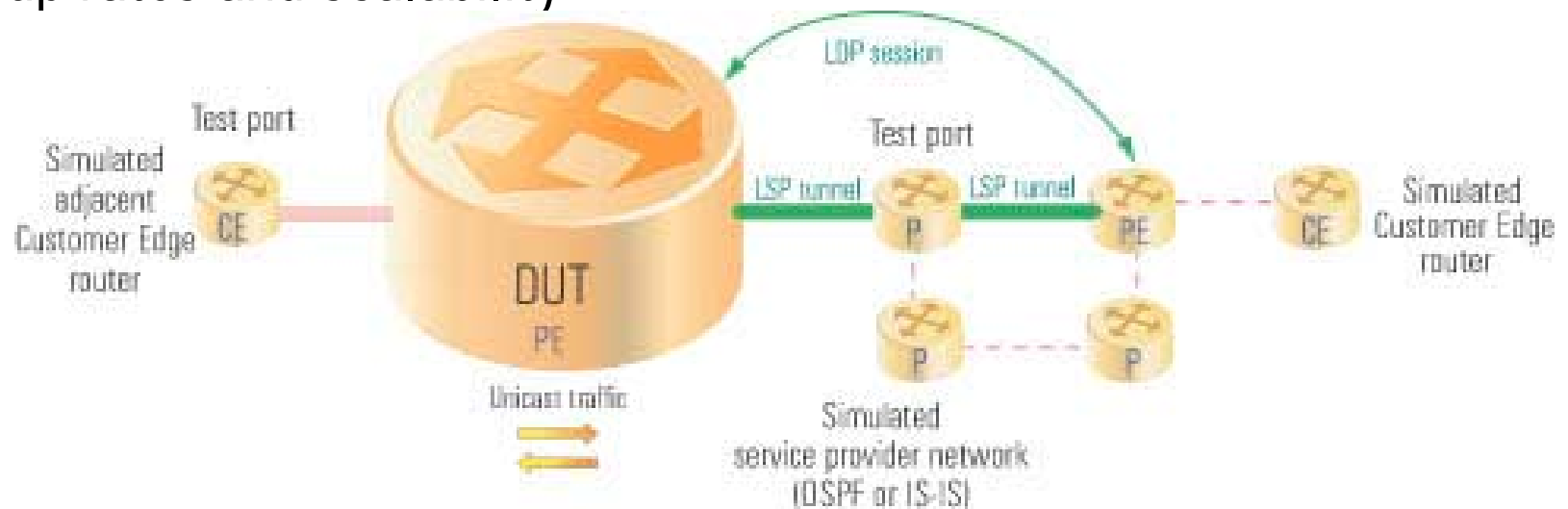
Advertise up to
1.5 million routes!



L2oMPLS (Martini) VPNs

RouterTester defines industry-leading test methodologies/tools.

- Simulate L2oMPLS VPN network elements/topologies
- Verify L2oMPLS VPN functionality
- Emulate 500 L2oMPLS sessions/port to measure virtual circuit (VC) set up rates and scalability

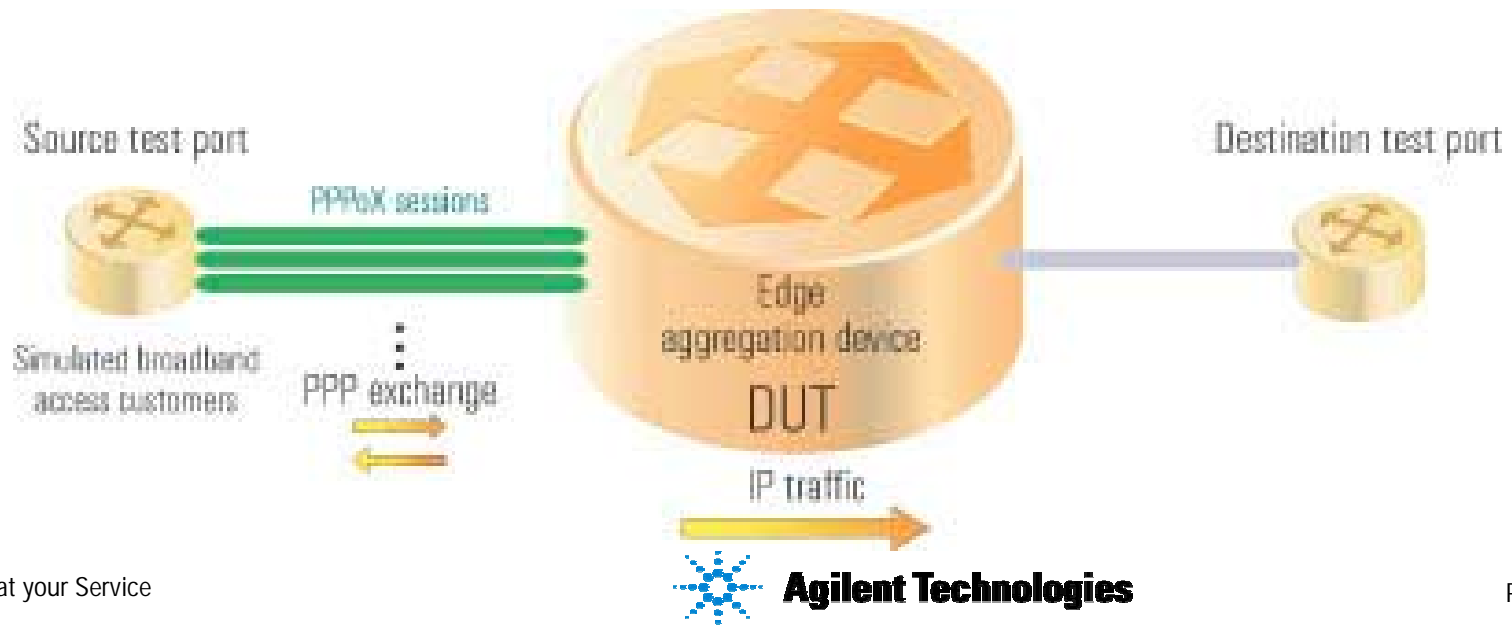


★ RouterTester played a key role in testing L2oMPLS VPN services at the MPLS interoperability event held by the MPLS Forum at Supercomm 2002.

PPPoX

RouterTester can emulate thousands of protocol sessions per port.

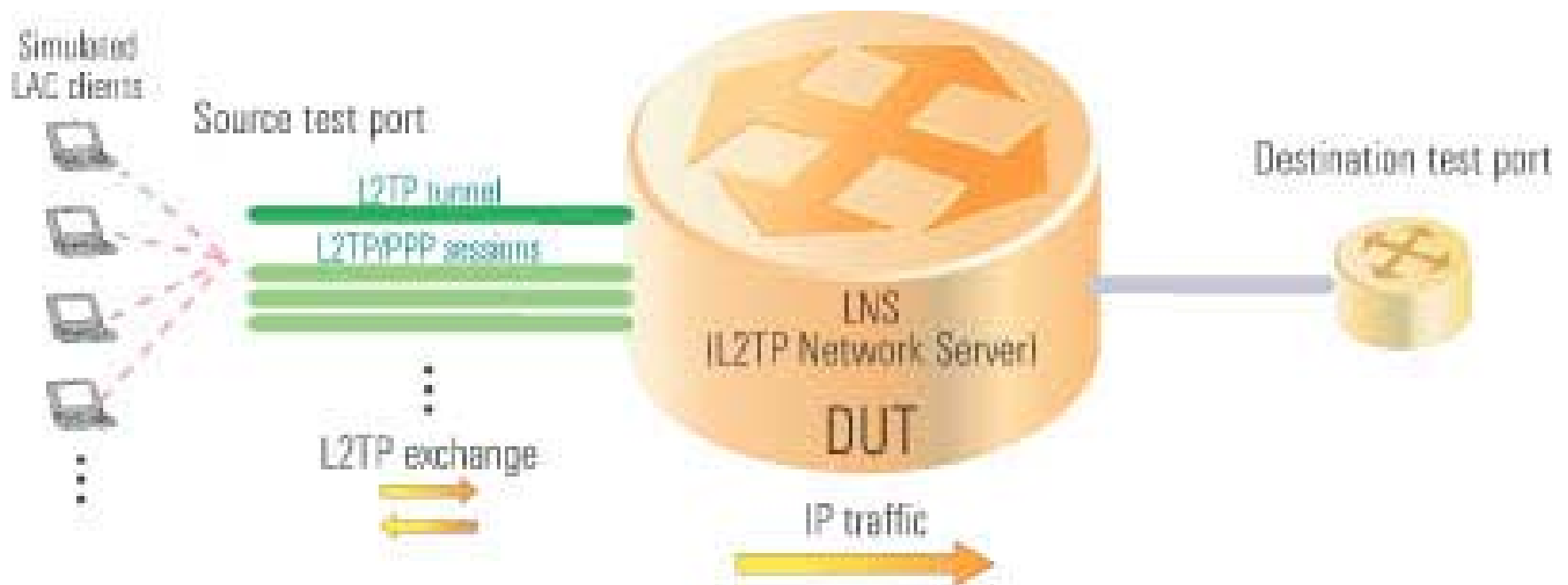
- Set up and authenticate over 100 PPP sessions/sec
- Simulate 16,000 PPPoE or 4095 PPPoA clients/hosts per port to identify PPP set up/tear down rates and scalability
- Generate wire-rate traffic streams over PPP sessions to measure QoS on a per-port/per-session basis



L2TP VPNs

RouterTester is the only tool for testing L2TP VPNs.

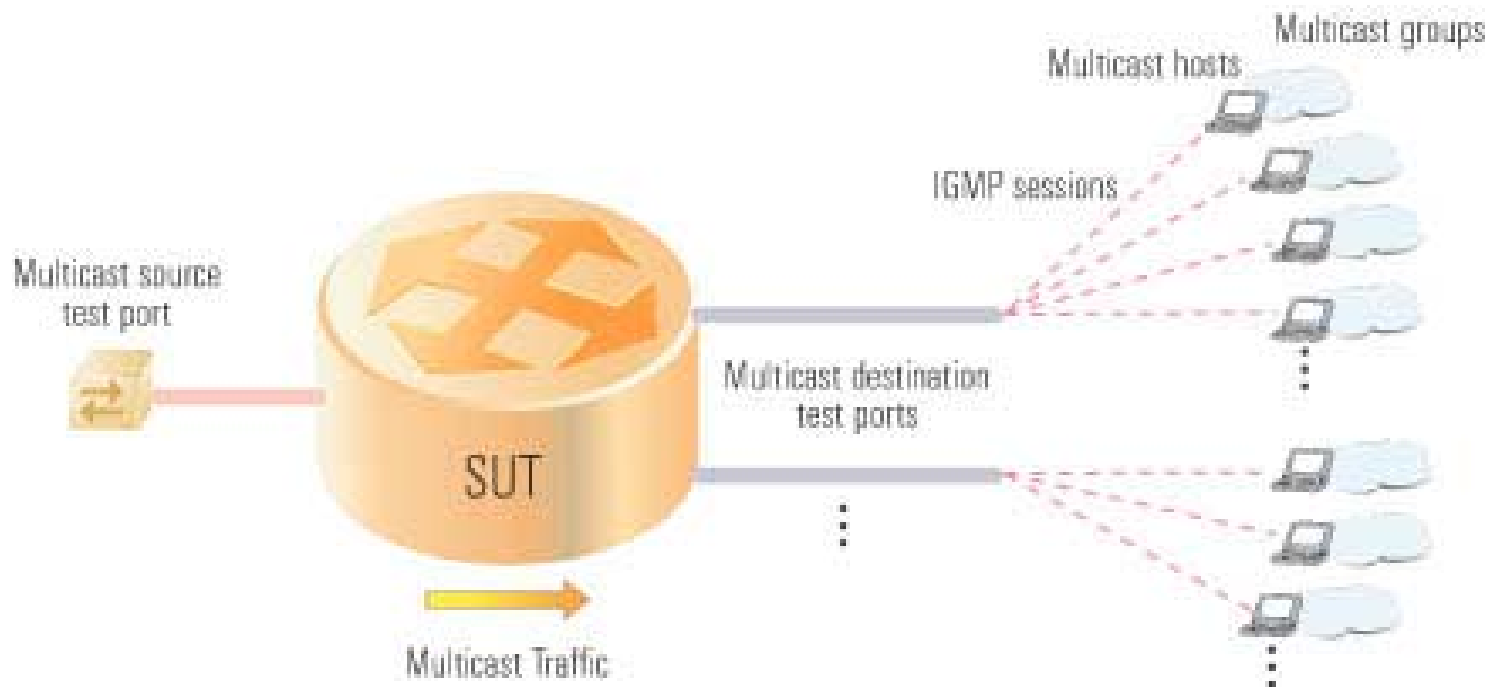
- Perform L2TP functional, stress and conformance testing.



Multicast

RouterTester has multi-session test capabilities.

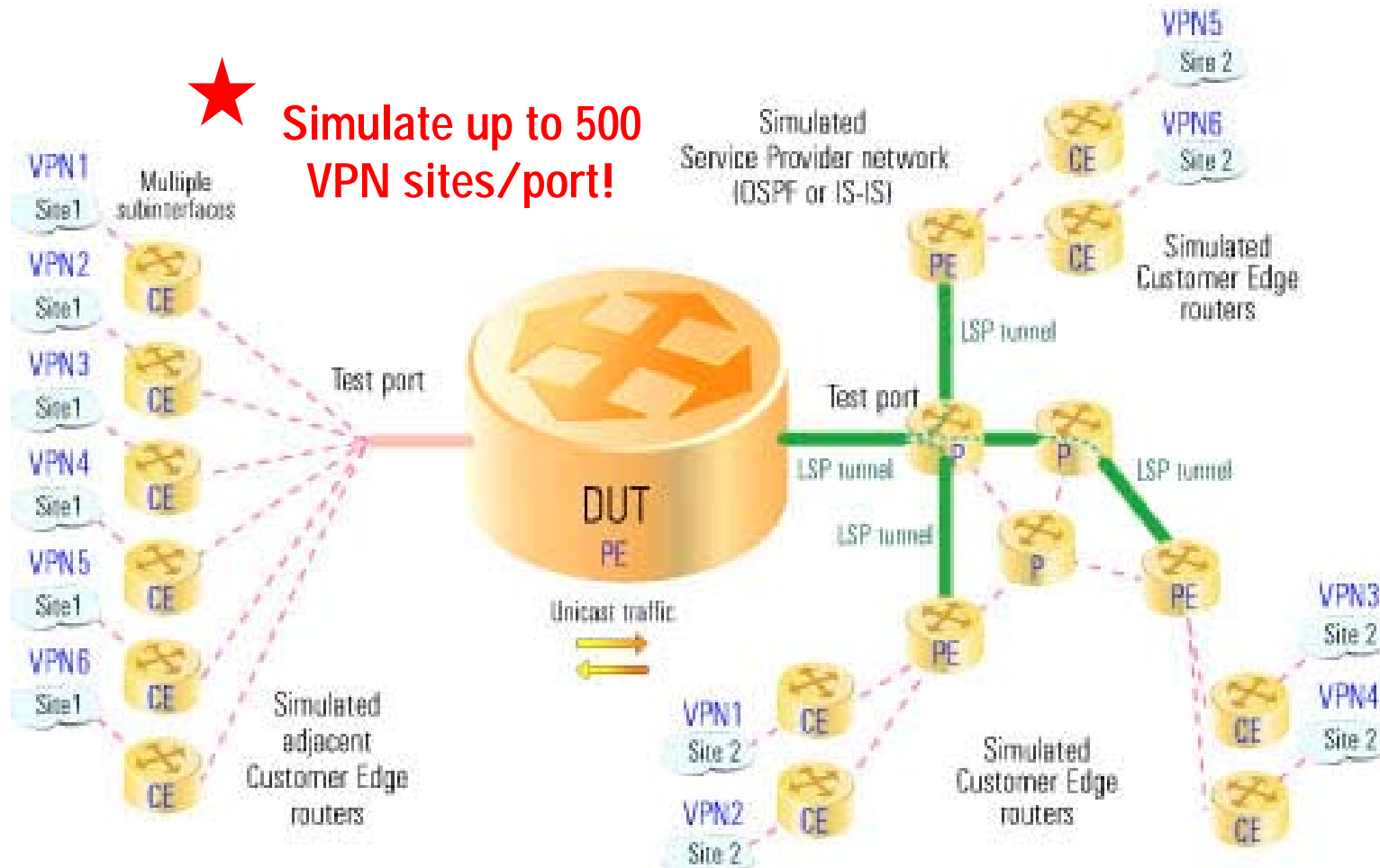
- Emulate hundreds of IGMPv3 or PIM-SM sessions per port
- Simulate extremely large multicast network topologies
- Quickly identify multicast scalability and QoS limitations



Services over VLAN and ATM PVCs

RouterTester emulates services over VLANs and ATM PVCs

- Quickly and easily scale test configurations



To review, RouterTester...

Tests more edge services than anyone else.

- Supports all routing and signaling protocols
- Integrates multi-protocol emulation and traffic
- Is the only tool for testing L2TP VPNs

Is thorough.

- Has comprehensive test coverage in a single box.

Is the industry's most scalable test tool.

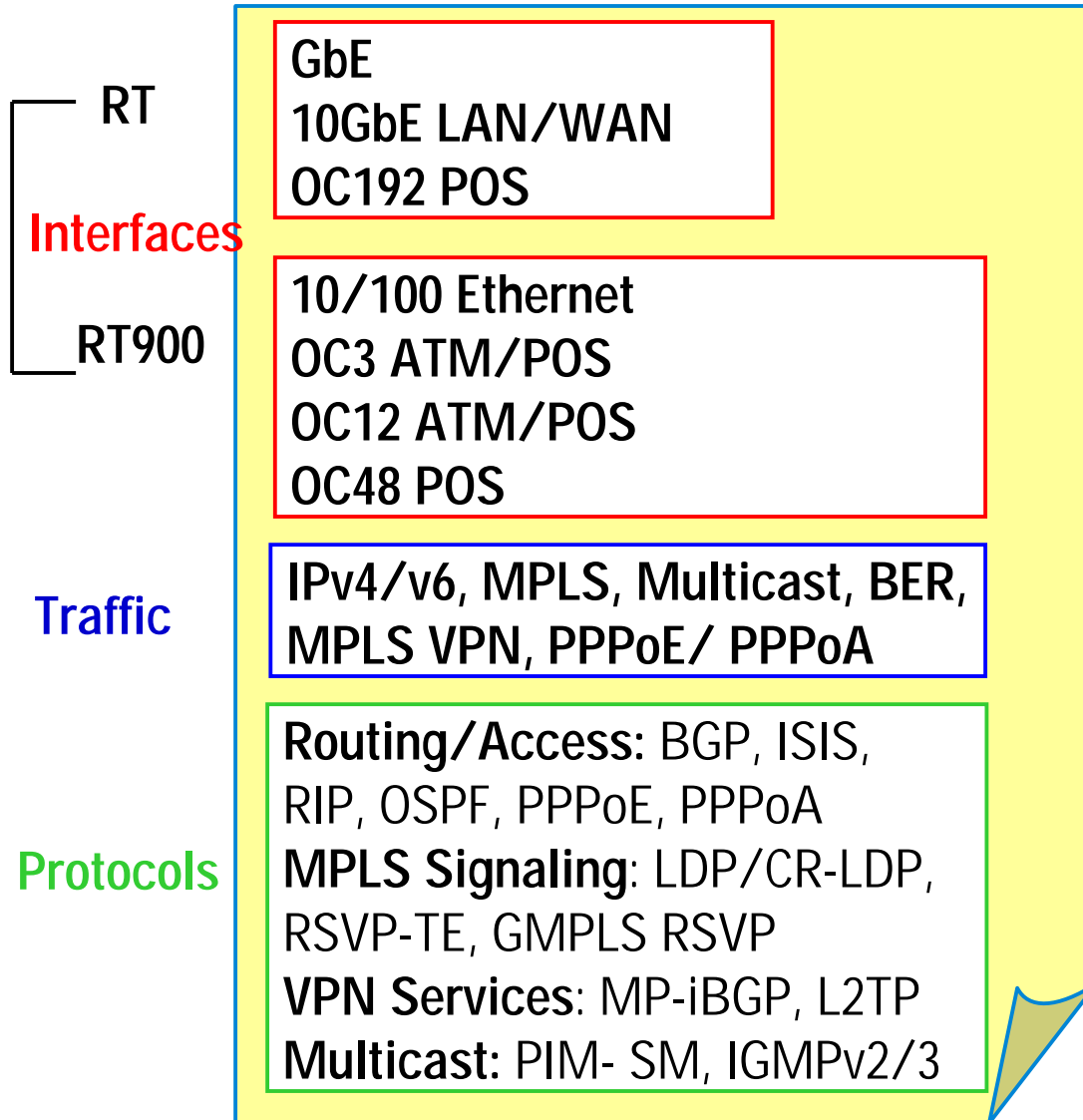
- Emulates thousands of protocol sessions per port
- Has multi-session test capabilities
- Emulates services over Ethernet VLANs and ATM PVCs

Helps to expedite test cycles.

- Defines industry-leading test plans and automated tools



Product Portfolio



Additional Information

To Learn More . . .

RouterTester Product Family

<http://www.agilent.com/comms/routertester>

RouterTester's Metro Test Solution

<http://advanced.comms.agilent.com/routertester/member/technology/edge/index.htm>

- Journal of Internet Test Methodologies:

<http://advanced.comms.agilent.com/routertester/member/journal.htm>



So... why do edge NEMs choose RouterTester for testing edge services?

Best ROI

- Best test coverage
- Best test scalability
- Broad interface range

Best time to market

- Test everything 'with one tool'
- Test leadership and automation

